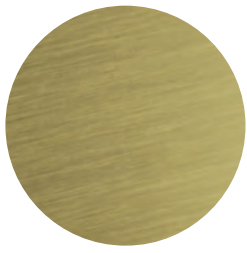


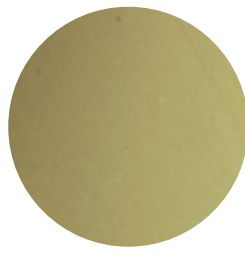
Finishes Available - Commercial & Industrial Locks



05
(US03) Bright Brass



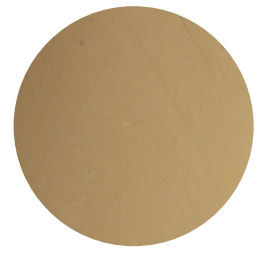
5E
PVD Anti-tarnish



06
(US04) Satin Brass



09
(US5) Antique Brass



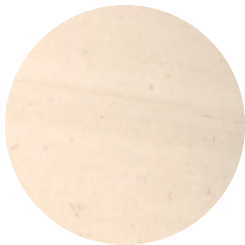
11
(US9) Bright Bronze



12
(US10) Satin Bronze



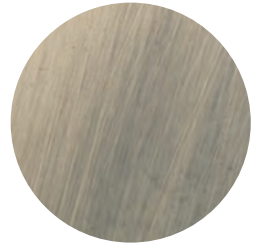
13
**(US10B) Dark Bronze/
Oil Rubbed**



18
(US14) Bright Nickel



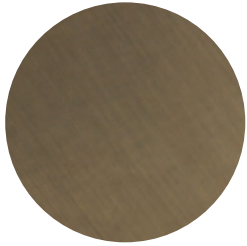
19
(US15) Satin Nickel



20
(US15A) Antique Nickel



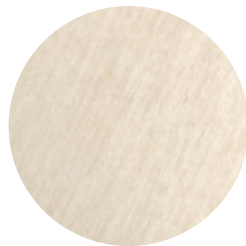
22
(US19) Flat Black



24
**(US20A) Dark
Bronze/Clear Coat**



25
**(US26)
Bright Chrome**



26
**(US26D)
Satin Chrome**

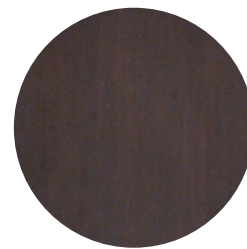
Finishes Available - Residential Locks



5E
PVD Anti-tarnish



19
(US15) Satin Nickel



10
**Satin Brass
Blackened**



09
Antique Brass

Note: Product appearance may differ from this chart as a result of the differences in plated versus printed materials.

5E (Anti-tarnish) finish only available on Maxum, Residential & Maxum SFIC. Other products available with additional lead time and cost.